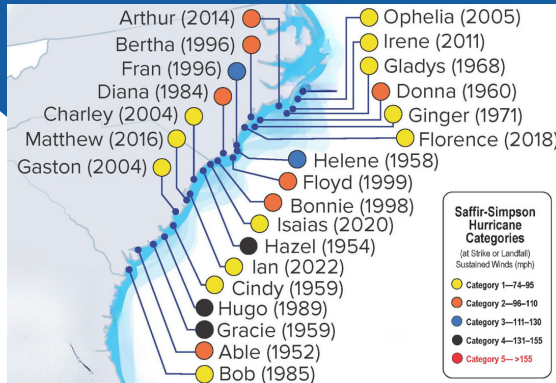


HURRICANE LANDFALLS IN THE CAROLINAS 1950-2022



Historically Impactful to Myrtle Beach

Hurricane Hazel 1954 - Category 4

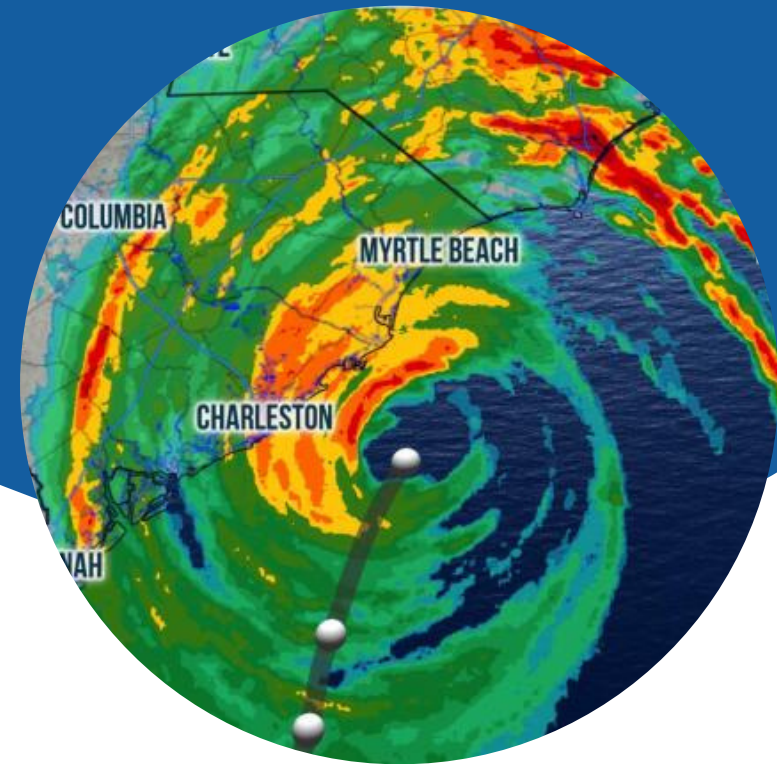
- Landfall: Little River, SC
- Windspeeds: 140 mph
- Storm surge: 17-18 feet
- Death toll: 95
- Damages: \$163 million, leaving a line of destruction and demolishing every pier from Myrtle Beach to Wilmington, NC.

Hurricane Hugo 1989 - Category 4

- Landfall: Sullivan's Island, SC
- Windspeeds: 140 mph
- Storm surge: 18-20 feet
- Death toll: 49
- Damages: \$7 billion, leaving nearly 60,000 homeless in the storm's path

Hurricane Florence 2018 - Category 1

- Landfall: Wrightsville Beach, NC
- Windspeeds: 85 mph
- Storm surge: 2-4 feet, 11 feet in NC
- Death toll: 22 5,214 water rescues
- Damages: \$24 billion
- 8th wettest tropical cyclone on record in the U.S., record-breaking flooding and closure of 2,400 roads



Contact Us

1170 HOWARD AVE

MYRTLE BEACH, SC 29577

843-918-2319

EMERGENCYMANAGER@CITYOFMYRTLEBEACH.COM

[myrtlebeachfire.com/
copy-of-emergency-manager](https://myrtlebeachfire.com/copy-of-emergency-manager)

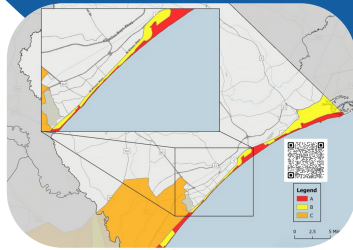
HURRICANE PREPAREDNESS IN THE CITY OF MYRTLE BEACH

Don't wait until an impending storm threatens our coast. Now is the time to prepare.



BEFORE THE STORM

KNOW YOUR ZONE



If voluntary or mandatory evacuation orders are issued by the State, do you know where you and your family will go?

Shelters should never be your first resort. Use the [Know Your Zone](#) tool to determine your evacuation route and determine a Plan A and a Plan B.

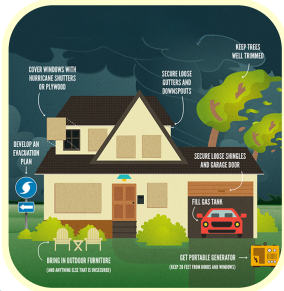
BUILD A KIT



Emergency supplies should be stored in a clean, dry, central location so that you aren't scrambling in the midst of disaster. Gather enough supplies to sustain your family (including pets) for 3-7 days.

visit ready.gov for a complete supply list

PREP YOUR HOME



Evaluate your home's storm vulnerability. Inspect roofs. Keep gutters and drains clear. Seal cracks. Review insurance policies annually.

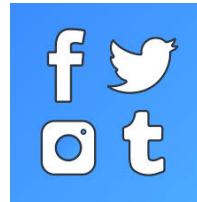
DURING THE STORM

STAY INFORMED

In the midst of the storm, it is important to keep yourself connected. Prioritize keeping devices charged prior to and during any power outages. If you experience interruption in utility services, report the outage directly to your service provider.

FOLLOW GOOD SOURCES

Be sure to follow reputable, valid sources, especially during times of emergency. The City of Myrtle Beach and its individual Departments utilize Social Media platforms to effectively keep you informed in a timely manner.



SIGN UP FOR ALERTS



The City of Myrtle Beach Emergency Management issues alerts through a free subscription-based notification system. Once registered, customize preferences like language and quiet hours in account settings.

HAVE A NOAA RADIO

A NOAA weather radio is an essential item to keep in your home and emergency kit to ensure you never miss time-sensitive weather alerts.



AFTER THE STORM

RE-ENTRY AFTER EVACUATION

After evacuation, you will be anxious to get back to your home and assess damages. However, re-entry is not permitted until officials have completed initial assessments to ensure the safety of roads and infrastructure. During this time, remain connected to those valid media outlets to keep you informed of proper re-entry instructions.

REMAIN CAUTIOUS

Many hazards present even after the storm has passed. Stay alert and use caution especially regarding:

- Flooded areas
- Hazardous debris
- Downed utility lines
- Contaminated water
- Broken gas lines
- Carbon Monoxide



USE GENERATORS SAFELY

Generators will be helpful during prolonged power outages, but they can be dangerous if not used properly. Never use a generator indoors. Place it at least 20 feet from your home and ensure the exhaust is venting away from doors/windows.

DOCUMENT DAMAGES FOR INSURANCE COMPANY

As it becomes safe to do so, begin to assess damages to your home and property. Document any storm-related damages with photos for your insurance.

scemd.org is a valuable emergency planning resource for South Carolina residents.

